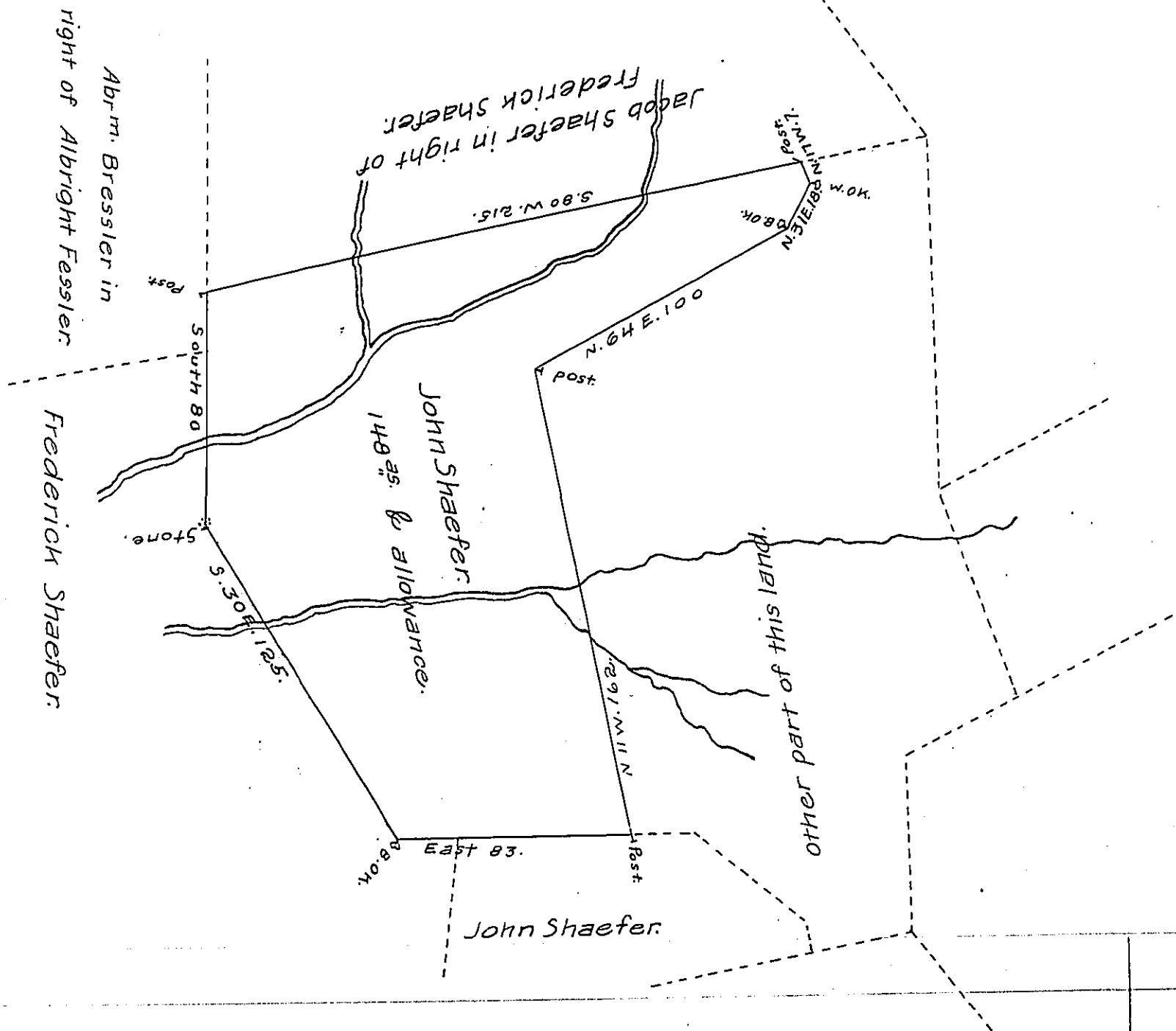


FORM No 1.



situate in Pinegrove Township Schuylkill County part of  
 323 acres & 151 perches Granted to John Shaefer by Warrant  
 dated 15<sup>th</sup> December 1784 Divided off the 14<sup>th</sup> February 1817.

Abrm. Fertig, D.S.

To Richd T. Leech, Esquire, S.G.

IN TESTIMONY that the above is a copy of the original remaining on file in  
 the Department of Internal Affairs of Pennsylvania, made  
 conformably to an Act of Assembly approved the 16th day of  
 February, 1833, I have hereunto set my Hand and caused  
 the Seal of said Department to be affixed at Harrisburg,  
 this twenty third day of May, 1907.

*Henry Houck*

Secretary of Internal Affairs.